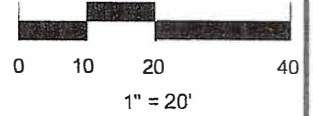


Recommended Run Times (minutes)

- Spray – Shrub 12
- Spray – Lawn 25
- Rotor – Lawn 45
- Drip – Lawn 45



Recommended Monthly Cycles

(Water Days)

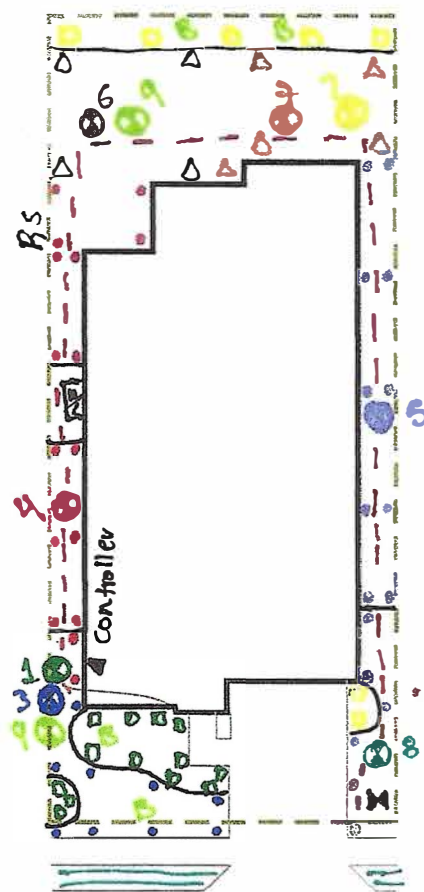
- January 3
- February 3
- March 4
- April 4
- May 7
- June 9
- July 11
- August 11
- September 9
- October 6
- November 4
- December 3

Recommended Maintenance

- Backflow – Test Annually
- Filter – Check Annually for debris
- Heads – Run system monthly checking for leaks or broken heads
- Valve Covers – Trim grass to keep exposed
- Controller – Seasonal update programming
- Winter – Run system briefly every 2 weeks if system turned off

Legend

- ⊗ Backflow
- ▲ Controller
- ⊕ Control Valve
- Spray - Shrub
- Spray - Lawn
- ▼ Rotor - Lawn
- B Bubbler
- Drip Tubing
- - - Main Line



COMPLETION ITEMS PROVIDED

- The manufacturer's manual for the controller
- A seasonal watering schedule.
- A list of components that require maintenance and the recommended frequency of maintenance.
- A permanent sticker has been attached to the controller indicating the warranty period for the irrigation system and contact information.
- The corrected or re-drawn design plans indicating the actual installation and components of the system.
- Location and operation of the isolation valve.

9004 THE RAVINE WAY



J

10.4.2024

This irrigation system has been installed in accordance with all applicable state and local laws, ordinances, rules, regulations or orders. I have tested the system and determined that it has been installed according to the irrigation plan and is properly adjusted for the most efficient application of water at this time.

Irrigation in Texas is regulated by the Texas Commission on Environmental Quality (TCEQ), MC-235, P.O. Box 13087, Austin, Texas 78711-3087. TCEQ's website is: www.tceq.texas.gov

NOTE: ALL Piping shown is diagrammatic and NOT illustrating actual location.

SHEET: 1 of 1	SCALE: 1" = 20'	JOB NUMBER: 787474HE9004	DATE: 10.4.2024	PROJECT: 9004 THE RAVINE WAY AUSTIN, TX 78744	SHEET DESCRIPTION: IRRIGATION PLAN	COMPANY: BEST OF TEXAS LANDSCAPES LIBERTY HILL, TEXAS 78642 (512) 260-1430 www.bestoftexaslandscapes.com
		CARTER: STUBBLEFIELD	DESIGNER: STUBBLEFIELD	LOT 32 BLOCK A PROSPECT PARK		