

**Recommended Run Times (minutes)**

- Spray – Shrub 12
- Spray – Lawn 25
- Rotor – Lawn 45
- Drip – Lawn 45



**Recommended Monthly Cycles**

(Water Days)

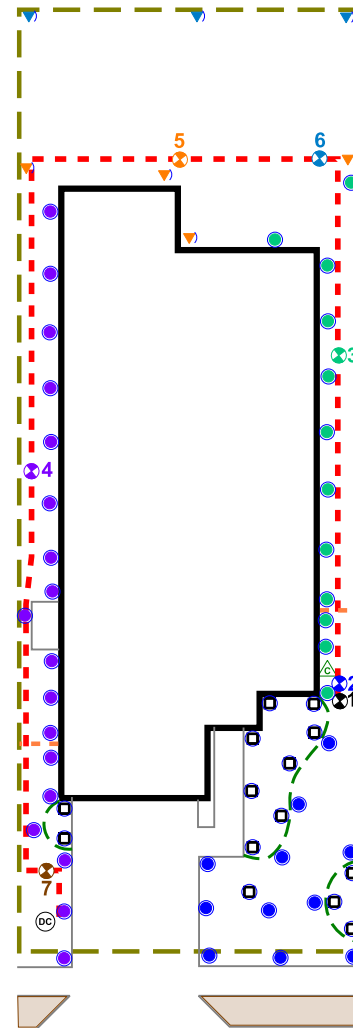
- January 3
- February 3
- March 4
- April 4
- May 7
- June 9
- July 11
- August 11
- September 9
- October 6
- November 4
- December 3

**Recommended Maintenance**

- Backflow – Test Annually
- Filter – Check Annually for debris
- Heads – Run system monthly checking for leaks or broken heads
- Valve Covers – Trim grass to keep exposed
- Controller – Seasonal update programming
- Winter – Run system briefly every 2 weeks if system turned off

**Legend**

- Ⓞ Backflow
- ⊗ Control Valve
- Spray - Shrub
- Spray - Lawn
- ▼ Rotor - Lawn
- ▬ Drip Tubing
- - - Main Line



**COMPLETION ITEMS PROVIDED**

- The manufacturer’s manual for the controller.
- A seasonal watering schedule.
- A list of components that require maintenance and the recommended frequency of maintenance.
- A permanent sticker has been attached to the controller indicating the warranty period for the irrigation system and contact information.
- The corrected or re-drawn design plans indicating the actual installation and components of the system.
- Location and operation of the isolation valve.

**12320 DAIRYWORK ROAD**



*[Signature]*

6.28.2024

This irrigation system has been installed in accordance with all applicable state and local laws, ordinances, rules, regulations or orders. I have tested the system and determined that it has been installed according to the irrigation plan and is properly adjusted for the most efficient application of water at this time.

\_\_\_\_\_  
System Owner / Representative

\_\_\_\_\_  
Date

**NOTE: ALL Piping shown is diagrammatic and NOT illustrating actual location.**

<b>SHEET:</b> 1 of 1	<b>SCALE:</b> 1" = 20'	<b>CHECKED BY:</b> STUBBLEFIELD	<b>DATE:</b> 6.28.2024	<b>REVISIONS:</b> COMPLETION: 08/07/24	<b>PROJECT:</b> 12320 DAIRYWORK ROAD BUDA, TX 78610	<b>SHEET DESCRIPTION:</b> IRRIGATION PLAN	<b>COMPANY:</b> BEST OF TEXAS LANDSCAPES LIBERTY HILL, TEXAS 78642 (512) 260-1430 www.bestoftexaslandscapes.com
					<b>DRAWN BY:</b> STUBBLEFIELD	<b>LOT 32 BLOCK A TURNERS CROSSING NORTH</b>	