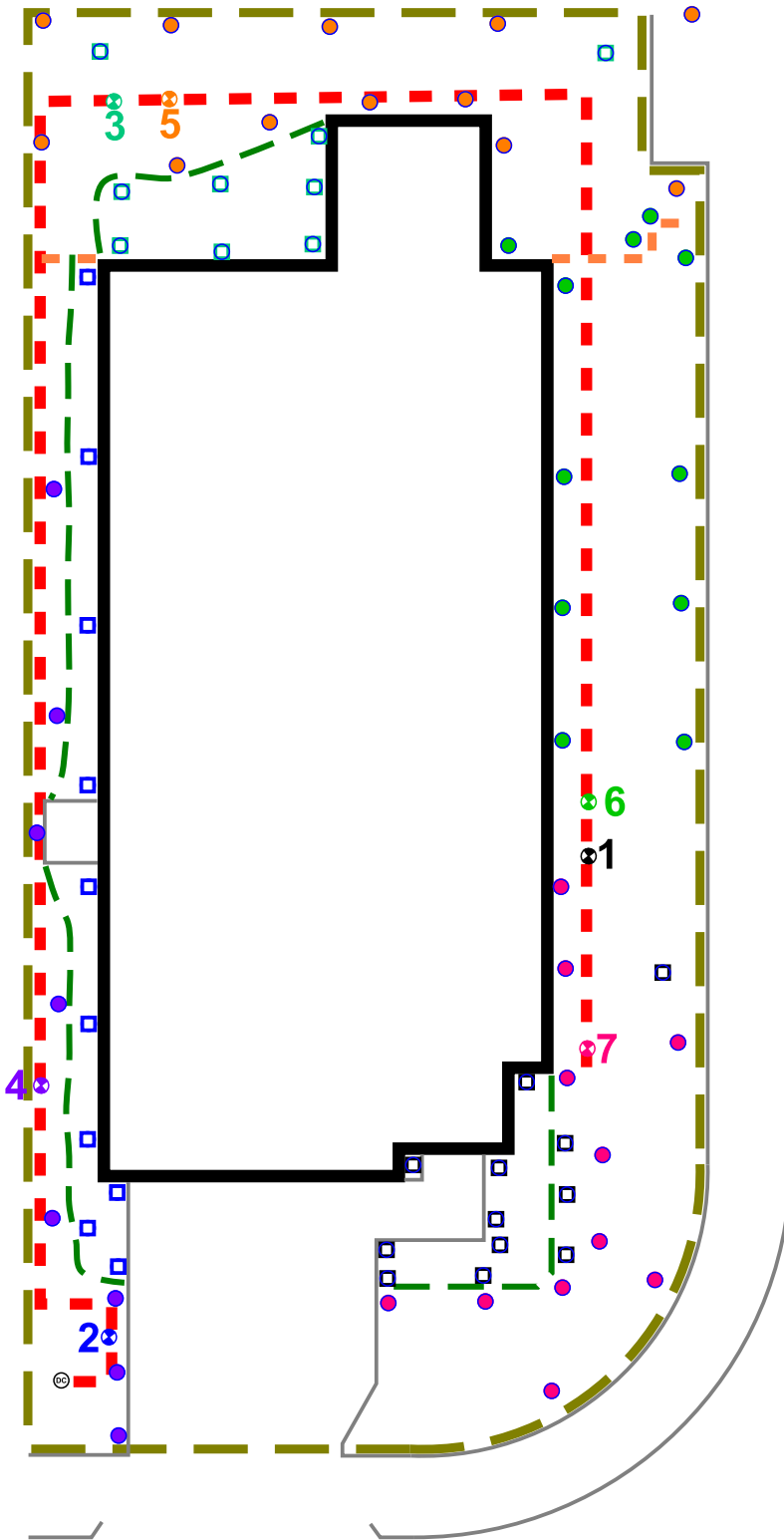


System Owner / Representative

Date



5412 JASON DRIVE

Recommended Run Times (minutes)

- Spray – Shrub 12
- Spray – Lawn 25
- Rotor – Lawn 45

Recommended Monthly Cycles (Water Days)

- January 3
- February 3
- March 4
- April 4
- May 7
- June 9
- July 11
- August 11
- September 9
- October 6
- November 4
- December 3

COMPLETION ITEMS PROVIDED

- The manufacturer's manual for the controller.
- A seasonal watering schedule.
- A list of components that require maintenance and the recommended frequency of maintenance.
- A permanent sticker has been attached to the controller indicating the warranty period for the irrigation system and contact information.
- The corrected or re-drawn design plans indicating the actual installation and components of the system.
- Location and operation of the isolation valve.

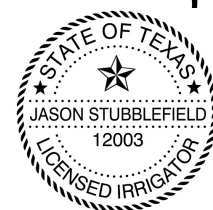
Recommended Maintenance

- Backflow – Test Annually (contact Lewis Sinclair 512-563-8762)
- Filter – Check Annually for debris
- Heads – Run system monthly checking for leaks or broken heads
- Valve Covers – Trim grass to keep exposed
- Controller – Seasonal update programming
- Winter – Run system briefly every 2 weeks if system turned off

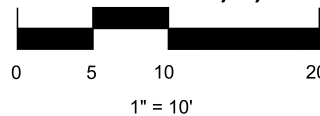
Legend

- ⊙ Backflow
- ⊗ Control Valve
- Spray - Shrub
- Spray - Lawn
- ▼ Rotor - Lawn
- ▭ Drip Tubing
- Main Line

This irrigation system has been installed in accordance with all applicable state and local laws, ordinances, rules, regulations or orders. I have tested the system and determined that it has been installed according to the irrigation plan and is properly adjusted for the most efficient application of water at this time.



11/02/2020



NOTE: ALL Piping shown is diagrammatic and NOT illustrating actual location.

COMPANY:

BEST OF TEXAS LANDSCAPES
LIBERTY HILL, TEXAS 78642

(512) 260-1430

www.bestoftexaslandscapes.com

SHEET DESCRIPTION:

IRRIGATION PLAN



PROJECT:

5412 JASON DRIVE
AUSTIN TX 78723

UNIT 63
PARK AT 51 EAST CONDOMINIUMS

REVISIONS:

COMPLETION:

06/28/24

DATE:

2020 - 11 / 02

JOB NUMBER:

78723-JAS-5412

DRAWN BY:

STUBBLEFIELD

CHECKED BY:

STUBBLEFIELD

SCALE:

1" = 10'

SHEET:

1 of 1