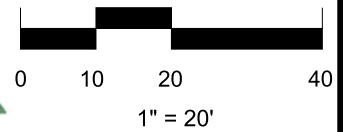


System Owner / Representative

Date

# Best of Texas

## Landscapes



### COMPLETION ITEMS PROVIDED

- The manufacturer's manual for the controller.
- A seasonal watering schedule.
- A list of components that require maintenance and the recommended frequency of maintenance.
- A permanent sticker has been attached to the controller indicating the warranty period for the irrigation system and contact information.
- The corrected or re-drawn design plans indicating the actual installation and components of the system.
- Location and operation of the isolation valve.

### Recommended Run Times (minutes)

- Spray – Shrub 12
- Spray – Lawn 25
- Rotor – Lawn 45

### Recommended Monthly Cycles (Water Days)

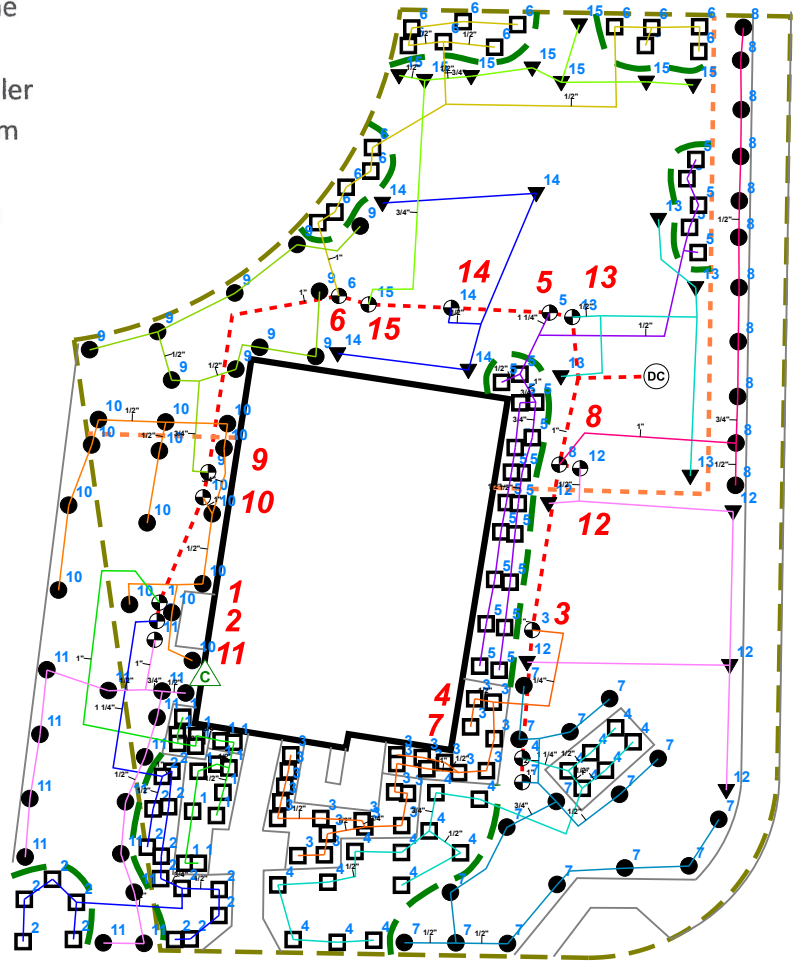
- January 3
- February 3
- March 4
- April 4
- May 7
- June 9
- July 11
- August 11
- September 9
- October 6
- November 4
- December 3

### Legend

- Ⓢ Backflow
- ⊗ Control Valve
- Spray - Shrub
- Spray - Lawn
- ▼ Rotor - Lawn
- Drip Tubing
- - - Main Line

### Recommended Maintenance

- Backflow – Test Annually (contact Lewis Sinclair 512-563-8762)
- Filter – Check Annually for debris
- Heads – Run system monthly checking for leaks or broken heads
- Valve Covers – Trim grass to keep exposed
- Controller – Seasonal update programming
- Winter – Run system briefly every 2 weeks if system turned off



**701 HAYS HILL DRIVE**



*[Signature]*

07/28/19

This irrigation system has been installed in accordance with all applicable state and local laws, ordinances, rules, regulations or orders. I have tested the system and determined that it has been installed according to the irrigation plan and is properly adjusted for the most efficient application of water at this time.

#### PROJECT:

701 HAYS HILL DRIVE  
GEORGETOWN, TX 78633

UNIT 12  
GATLIN CREEK

#### SHEET DESCRIPTION:

IRRIGATION PLAN



#### COMPANY:

BEST OF TEXAS LANDSCAPES  
LIBERTY HILL, TEXAS 78642

(512) 260-1430

www.bestoftexaslandscapes.com

DATE: 2019 - 07 / 24  
JOB NUMBER: 78633-HAY-701  
DRAWN BY: SINCLAIR  
CHECKED BY: STUBBLEFIELD  
SHEET: 1 of 1  
SCALE: 1" = 20'

REVISIONS:  
COMPLETION: 07/28/19