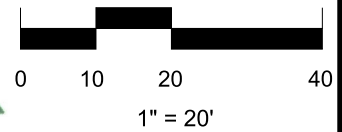


System Owner / Representative

Date

Best of Texas

Landscapes



COMPLETION ITEMS PROVIDED

- The manufacturer's manual for the controller.
- A seasonal watering schedule.
- A list of components that require maintenance and the recommended frequency of maintenance.
- A permanent sticker has been attached to the controller indicating the warranty period for the irrigation system and contact information.
- The corrected or re-drawn design plans indicating the actual installation and components of the system.
- Location and operation of the isolation valve.

This irrigation system has been installed in accordance with all applicable state and local laws, ordinances, rules, regulations or orders. I have tested the system and determined that it has been installed according to the irrigation plan and is properly adjusted for the most efficient application of water at this time.

Recommended Maintenance

- Backflow – Test Annually (contact Lewis Sinclair 512-563-8762)
- Filter – Check Annually for debris
- Heads – Run system monthly checking for leaks or broken heads
- Valve Covers – Trim grass to keep exposed
- Controller – Seasonal update programming
- Winter – Run system briefly every 2 weeks if system turned off

Recommended Monthly Cycles

(Water Days)

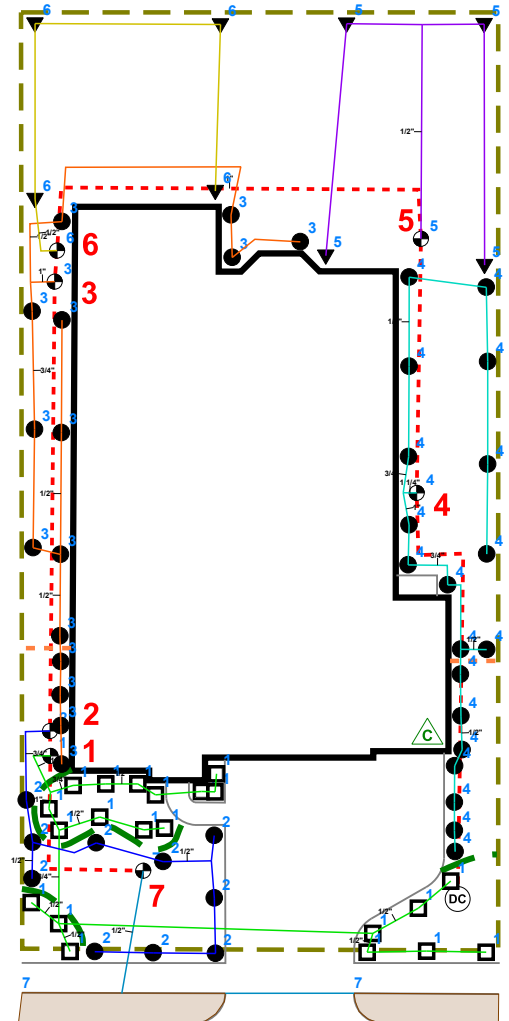
• January	3
• February	3
• March	4
• April	4
• May	7
• June	9
• July	11
• August	11
• September	9
• October	6
• November	4
• December	3

Recommended Run Times (minutes)

• Spray – Shrub	12
• Spray – Lawn	25
• Rotor – Lawn	45

Legend

- ⊙ Backflow
- ⊗ Control Valve
- Spray - Shrub
- Spray - Lawn
- ▼ Rotor - Lawn
- ▬ Drip Tubing
- - - Main Line



2928 MOSSY SPRINGS DRIVE



[Signature]

12/16/18

PROJECT:

2928 MOSSY SPRINGS DRIVE
LEANDER, TX 78641

LOT 11, BLOCK Y
BLUFFS AT CRYSTAL FALLS

SHEET DESCRIPTION:

IRRIGATION PLAN



COMPANY:

BEST OF TEXAS LANDSCAPES
LIBERTY HILL, TEXAS 78642

(512) 260-1430

www.bestoftexaslandscapes.com

DATE:	2018 - 11 / 25
JOB NUMBER:	78641-MOS-2928
DRAWN BY:	SINCLAIR
CHECKED BY:	STUBBLEFIELD
SCALE:	1" = 20'
SHEET:	1 of 1

REVISIONS:
COMPLETION: 12/16/18